

# IC100 CRANES 2025

The IC100 is the original industry ranking of the largest crane operating companies in the world and each year it grows in popularity. We've already received some enquiries for entries, so, if your company has not yet taken part, this is your chance to ensure it has a chance to take a position in the listing.

We calculate the IC100 figure by totalling the maximum load moment rating, in tonne-metres, of all wheeled mobile and lattice boom cranes in your fleet as at 5 May 2025.

Simply fill out the IC100 form over the page and submit it to us. If you send us a list of the cranes in your fleet, which would be helpful, please include the make, model, type, capacity and number of units for each model.

If you have any questions regarding the form, or require help representing tonne-metres, contact the editor, Alex Dahm, by phone: **+44 (0)1892 786206** or, e-mail: **alex.dahm@khl.com**

**Sarens' SGC-90 electric ring crane performing a series of lifts in support of Ørsted's Greater Changhua Offshore Wind Farm, a 900 MW-capacity facility in the Taiwan Strait**

It's time to enter **International Cranes and Specialized Transport** magazine's annual IC100 (formerly IC50) listing which ranks the world's largest crane companies

## EDITOR'S IC100 NOTES

- 1 All IC Index figures should be given as a maximum load moment rating in tonne-metres.
- 2 Tower cranes are not included in the IC Index. Please ensure that there are no figures for this equipment in your calculations – if you have tower cranes please request an IC Tower Index entry form.

3 Alternative lifting equipment is no longer included in the IC Index. Please ensure there are no figures for this equipment in your calculations or submissions.

4 Figures in the IC Index for crawler and wheeled mobile cranes should include an allowance for any super lift attachments that you own.

5 The IC Index should include all cranes that are in

your fleet as of 6 May this year. Do not include cranes you have ordered but that have not yet been delivered.

6 To help illustrate the IC100 editorial in the magazine it would be great if you could include some photographs, perhaps showing your cranes in action, with a few details. They will be considered for publication.

**PLEASE COMPLETE AND RETURN THE FORM BY MONDAY 5 MAY 2025**

# IC100 CRANES 2025

Please read the form and the notes on the previous page carefully. If you have any questions, do not hesitate to contact the team at **International Cranes and Specialized Transport**.

The listing must only include cranes you will actually have in your fleet on 5 May 2025.  
Please do not include cranes for which you have placed orders but not yet taken delivery.

Company name \_\_\_\_\_

Full address of company HQ \_\_\_\_\_

\_\_\_\_\_

\_\_\_\_\_

Name of senior contact \_\_\_\_\_

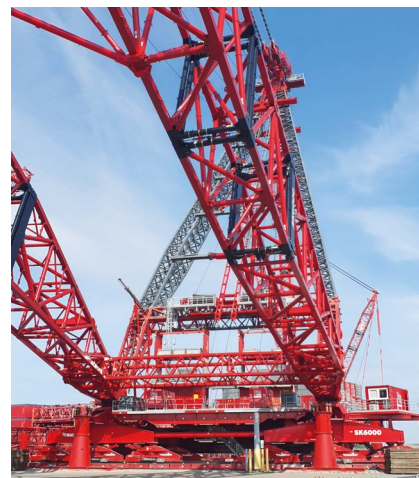
Job title of senior contact \_\_\_\_\_

e-mail address \_\_\_\_\_

Company web site \_\_\_\_\_

## IC100 CRANES

Number of wheeled mobile cranes _____	Total tonne-metre rating _____
Number of crawler or lattice cranes _____	Total tonne-metre rating _____
Total IC Index * (tonne-metres) _____	
Make and model of largest crane _____	
Lifting capacity of largest crane in metric tonnes _____	
Average age, in years, of the equipment in your fleet _____	
Number of depots _____	Number of employees _____
Scope of operation <input type="checkbox"/> local <input type="checkbox"/> national <input type="checkbox"/> continental <input type="checkbox"/> worldwide	
Annual sales, in US\$, from crane-related activity _____	
<input type="checkbox"/> I confirm that the information shown above is correct.	
Signed: _____	
Name (please print) _____	Date _____
Job title _____	
e-mail address _____	



**Mammoet's 6,000 tonne capacity ring crane assembled and ready for testing at Mammoet's yard in Westdorpe, Netherlands. Mammoet ranked #1 on the 2024 IC100 TopList**

### \*IMPORTANT

To calculate your IC Index, please add together the maximum load moment ratings in tonne-metres of all the lattice boom cranes and wheeled mobile cranes in your equipment fleet to produce a total figure.

### RETURN BY EMAIL

alex.dahm@khl.com

### OR BY POST

ALEX DAHM  
KHL Group  
Southfields,  
Southview Road,  
Wadhurst,  
East Sussex  
TN5 6TP  
United Kingdom